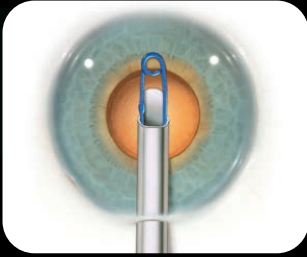


MT Malyugin Ring™

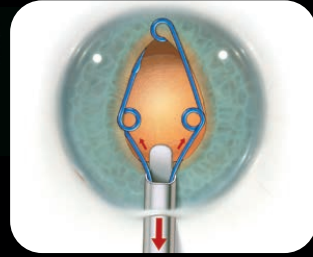
Ring Placement

1



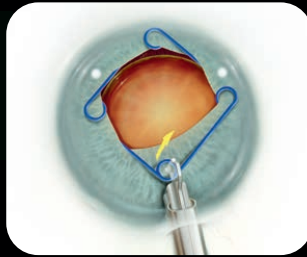
With viscoelastic in the anterior chamber inject the Ring starting with the cannula end at mid pupil

2



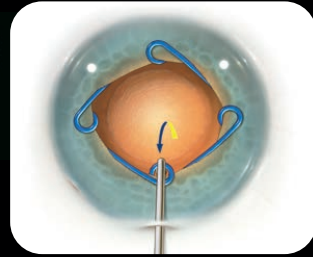
Inject while simultaneously retracting the injector. "Toeing" the injector down eases placement of the lateral scrolls

3



Just lift to disengage before placing the proximal scroll onto the iris

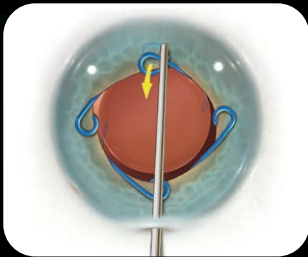
4



Use a Osher/Malyugin Ring Manipulator to place the proximal scroll

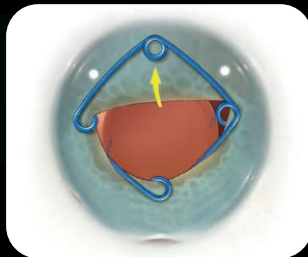
Ring Removal

1



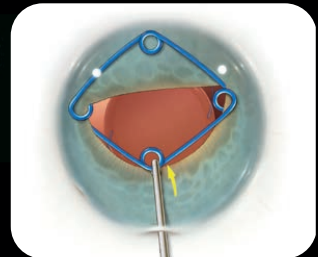
Use a Osher/Malyugin Ring Manipulator to disengage the distal scroll

2



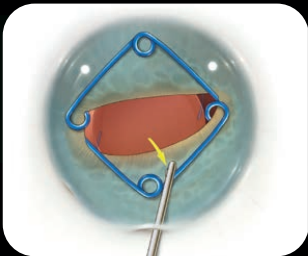
Place the distal scroll onto anterior iris

3



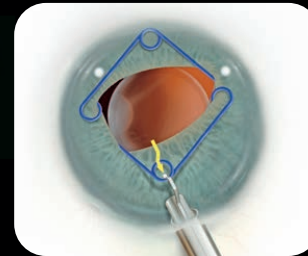
Move the proximal scroll toward the center of the pupil, and a bit anterior to disengage

4



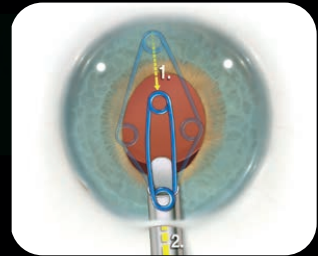
Place the proximal scroll onto anterior iris

5



Simply enter the proximal scroll and pull by moving the button back

6



Stop when the left scroll rides above the cannula, then remove the "assembly"